

Ratatouille Solutions



Ratatouille offer optimized nutritional solutions for laboratory animals for successful scientific research along with special diets of laboratory animals as per scientific requirement. Ratatouille diets assured its quality and quantity along with high palatability diets.





About Us

- Ratatouille is pioneer in optimized nutritional diet for Laboratory animals for successful Scientific research.
- Ratatouille have capabilities to design special lab diet according to specific requirement of scientist for their various research in collaboration with scientist.
- Ratatouille is India based company. Have vast experience of 13 years for manufacturing of Laboratory animal diets and as per scientific requirement with portfolio of Maintenance diet, Breed diet and special diets like vitamin diet, high fat diet, protein diet and calcium diet.
- Ratatouille is working with good clientele base across North India and looking forward to serve in South India also with the capacity to cater the large order.
- Ratatouille diets assured its quality and quantity along with high palatability. Our diets are hygienic and pathogens free and having long self life.



Why Ratatouille

- Passionate to be part of Indian research and development with contribution of laboratory animal diets.
- Vast experience of 13 Years.
- Specialization in laboratory animal diets.
- Capable to cater large value order.
- Constant high quality diets with various required composition and lab certificate.
- In house hygienic production under experienced professional supervision.
- Ratatouille products are irradiated and autoclaved to make sure it pathogen free and ensure palatability of diets.
- Air tight packing in good gaize of attractive P P Bags in 25 Kg to make it moisture free and ease to use and storage.
- Ratatouille products manufacture under hygienic environment using good quality raw material after receiving your valuable order to ensure freshness, quality, sustainability of product.
- We ensure to procure high quality grain raw material directly from farmers and other ingredients from reliable & trusted manufacturers and goes through stringent quality test before use.
- We are using close loop manufacturing process to maintain product quality and hygiene.



Our Quality Assurance:-

Before production:-

- We ensure to procure high quality grain raw material directly from farmers and other ingredients from reliable & trusted manufacturers and goes through stringent quality test before use.

During the production:-

- Production under professional supervision with close loop system with strict protocols and safety tools.
- Hygienic environment.
- Constant composition and defined timeline.

After Production:-

- Ratatouille products undergoes for chemically and micro-biologically analytics.
- Upon request you will receive complete GLP analytics certificates all products.



OUR PRODUCTS



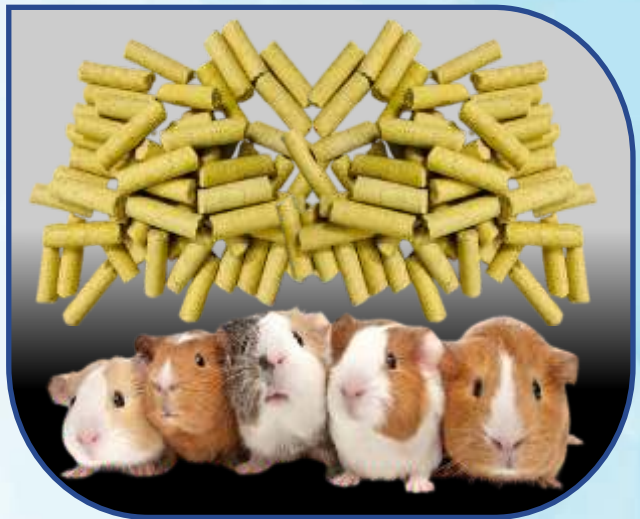
Standard Diet



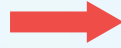
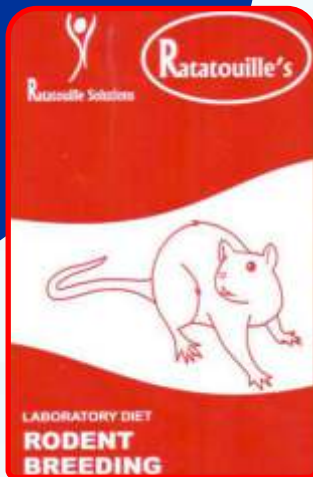
Special Diet



Breed Diets



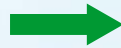
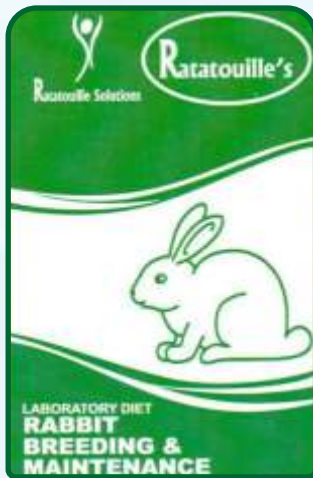
OUR PRODUCTS



Nutrients Composition

Macronutrients	Rodents (Breeding)
Crude Protein (min)	20-22%
Crude Fat (min)	5-6%
Crude Fiber (max)	5-6%
Moisture (max)	10%
Total Ash (max)	6%
Metabolizable Energy (K cal/gm)	3.33.5

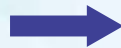
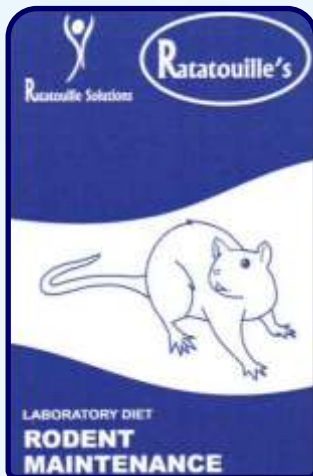
Note: Vitamins and minerals as per standard requirements



Nutrients Composition

Macronutrients	Rabbits
Crude Protein (min)	16-18%
Crude Fat (min)	3-4%
Crude Fiber (max)	10-15%
Moisture (max)	10%
Total Ash (max)	8%
Metabolizable Energy (K cal/gm)	1.6-2.5

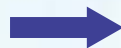
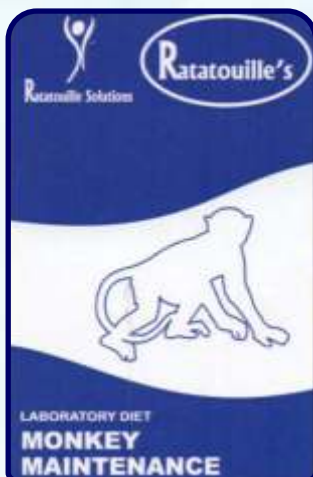
Note: Vitamins and minerals as per standard requirements



Nutrients Composition

Macronutrients	Rodents (Maintenance)
Crude Protein (min)	16%
Crude Fat (min)	4-5%
Crude Fiber (max)	5%
Moisture (max)	10%
Total Ash (max)	5%
Metabolizable Energy (K cal/gm)	2.7-3.4

Note: Vitamins and minerals as per standard requirements



Nutrients Composition

Macronutrients	monkey Diet
Crude Protein (min)	16%
Crude Fat (min)	4-5%
Crude Fiber (max)	5%
Moisture (max)	10%
Total Ash (max)	5%
Metabolizable Energy (K cal/gm)	2.7-3.4

Note: Vitamins and minerals as per standard requirements



THE LABORATORY MOUSE



**We also provide bedding materials for laboratory animals
Corn Cobb Grit available in all size
(4-5mm, 6-8mm, 10-12mm)**

Thank You

RATATOUILLE SOLUTIONS

📍 Plot No. 131, Near Hanuman Nagar
Kund Road, Behror-301701

☎ +91-9873516116

✉ info@ratatouillesolutions.com

🌐 www.ratatouillesolutions.com



Scan QR for Website

